



Melville Friendship Club offers a range of interesting activities\* every weekday in Willagee. It's a great way to get together regularly, maintain friendships and make new friends.

**Contact the Friendship Club by phone on 9319 0900 or email: [friendshipclub@melvillecares.org.au](mailto:friendshipclub@melvillecares.org.au).**

**\*Activities subject to change.**

Monday	Tuesday	Wednesday	Thursday	Friday
	<b>1 Oktoberfest</b> Cabaret Movie / Casablanca	<b>2</b> Visit Burswood and Picnic in the park	<b>3 Oktoberfest</b> celebrations	<b>4 Oktoberfest</b> World Smile Day
<b>7</b> Visit Burswood and Picnic in the park	<b>8</b> Musical Quiz Day with Lisa	<b>9</b> Volley ball tournament at Bethanie	<b>10 Paul Robinson Concert</b> <b>1.00pm</b>	<b>11 Wayne Pride</b> <b>11.30am</b>
<b>14</b> Who's got what with Katrina. Team with the most points win	<b>15</b> Celebrate Rural Women's Day Bean bag toss, games in the big hall with Katrina	<b>16 Derek Eden Concert</b> <b>1.00pm</b>	<b>17</b> Whiteboard games The price is right Anagram's with Katrina	<b>18</b> Spring into spring with Tania
<b>21</b> Celebrate OT with games and activities by Raquel	<b>22 Darry Dodd Concert</b> <b>11.30 am</b>	<b>23</b> Pamper day hand massage, nail painting with Katrina	<b>24</b> Moulin Rouge Day Drive to local park	<b>25</b> Celebrate OT with games and activities by Raquel
<b>28</b> Kimbo's booked 10.45 am Or games at the club	<b>29</b> Fishing and Picnic at Bicton Baths	<b>30</b> Who's got what with Katrina Team with the most points win	<b>31</b> Halloween with Melville Friends	



## October Birthdays

**6th Helen**  
**13th Jim**  
**15th Margaret**  
**20th Peter**  
**21st Terri**  
**29th Wendy**



## Rural International Women's day 15th October

### Rural Women's Day celebrate empowering rural women

Rural Women's Day is a not-for-profit organisation that focuses on connecting, collaborating and celebrating rural and regional women across Australia and New Zealand.

Rural Women's Day reduces isolation, by helping rural women connect to their communities – locally and beyond.



## What happened in October - Fun Facts

**October 1, 1908** - Henry Ford's Model T, a "universal car" designed for the masses, went on sale for the first time.

**October 4, 1935** - Luna Park in Sydney is officially opened.

**October 6, 1927** - The first "talkie" opened in New York. The Jazz Singer starring Al Jolson was the first full-length feature film using spoken dialogue.

**1862** - The Melbourne Zoo is opened

**1978** - Rock and roll singer Johnny O'Keefe dies.

**1911** - Compulsory voting is introduced

**October 8, 1908** - The capital of Australia was chosen, settling a feud between rivals Melbourne and Sydney.

**October 9th Birthday** - John Lennon (1940-1980) was born in Liverpool, England. He was a member of The Beatles, an influential rock group which captivated audiences first in England and Germany, and later in America and throughout the world. He was murdered in New York City on December 8, 1980.

**1923** - Cairns, Queensland is proclaimed a city

**1912** - Maternity allowance introduced. Married and single women who had given birth received 5 pounds to cover the cost of medical care for themselves and their babies.

**Oct 13th 1933** - Australia's first traffic lights are installed in Sydney

**Oct 16th Birthday** - Irish poet and playwright Oscar Wilde (1854-1900) was born in Dublin, Ireland. Best known for his comedies including; The Importance of Being Earnest. And his novel The Picture of Dorian Gray in which he wrote, "There is only one thing in the world worse than being talked about and that is not being talked about."

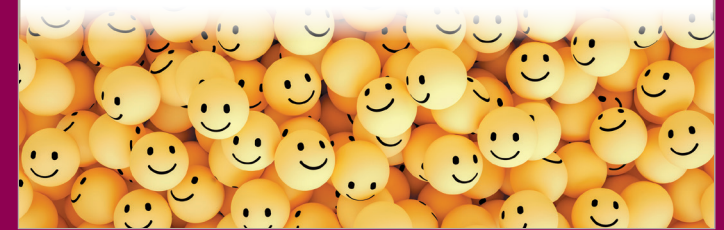
**October 19th 1872** - Holtermann's nugget, a 286 kg slab of granite containing 82.11 kg of gold, was found in New South Wales.

**Oct 25th 1941** - Singer Helen Reddy is born in Melbourne.

**Oct 31st 1929** - Eddie Charlton, top-class snooker and billiards player, is born in Merewether, New South Wales. First Royal visit 1867 - Prince Alfred second eldest son of Queen Victoria landed in Adelaide.

## World Smile Day - 4th October

World Smile Day is a heartwarming global celebration dedicated to spreading happiness and encouraging acts of kindness. This day reminds us of the simple yet powerful impact of a smile and the joy it can bring to ourselves and others.



## Halloween Celebration - 31st October

### What is the true spiritual meaning of Halloween?

Halloween is considered a powerful turning point in the wheel of the year, signifying a time when people release and let go of negative and lower energies that hold them back and celebrate the new energy that will eventually take its place.

